

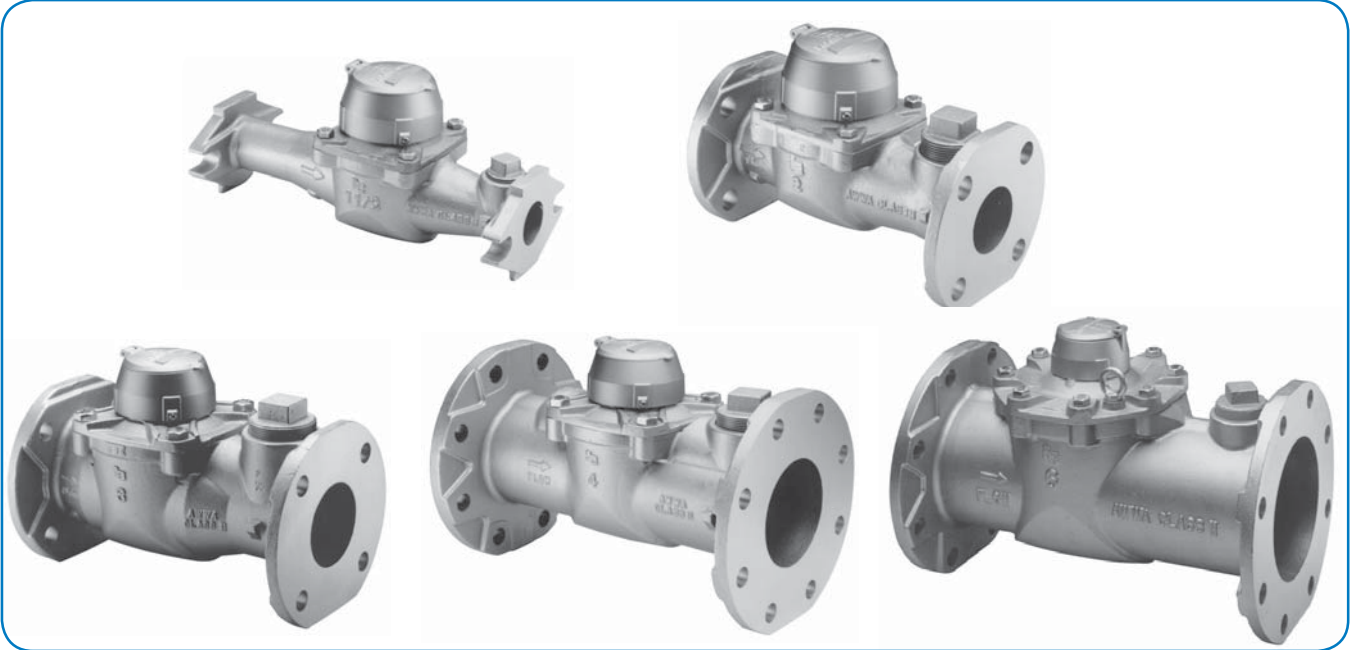


**Badger Meter**

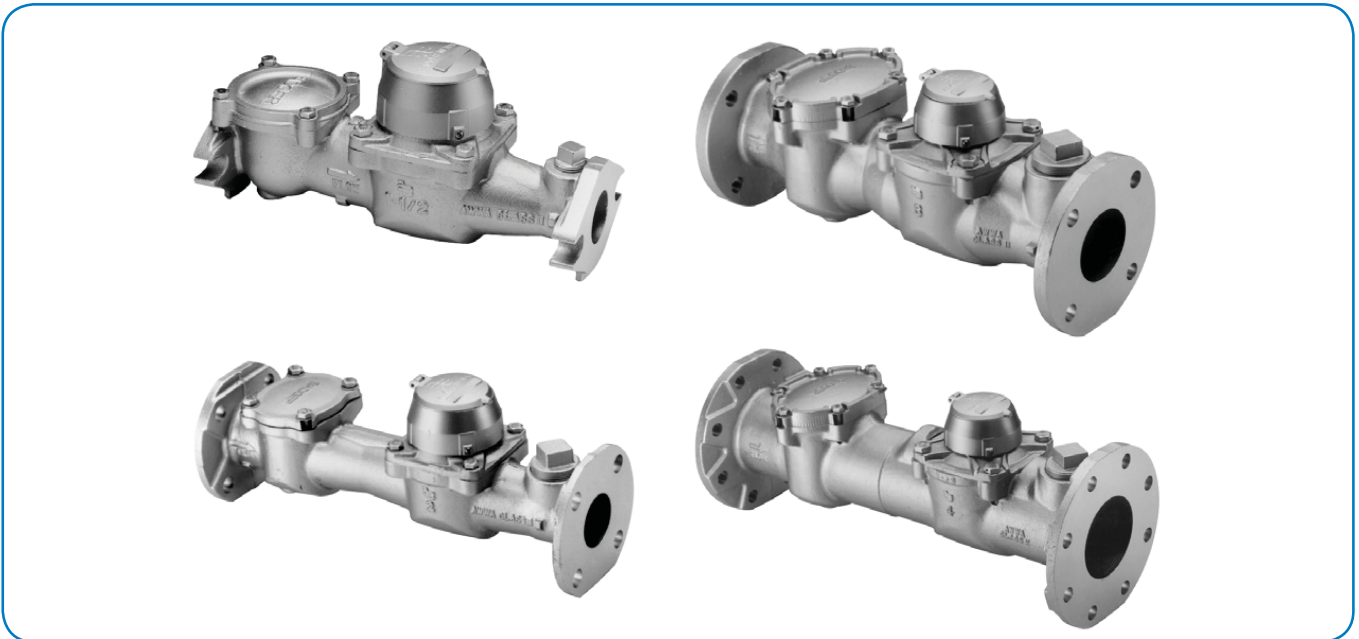
## Recordall® Turbo Series Meters

Models 160 (1-1/2"), 200 (2"), 450 (3"), 1000 (4"),  
2000 (6"), 3500 (8"), 5500 (10"), 6200 (12")

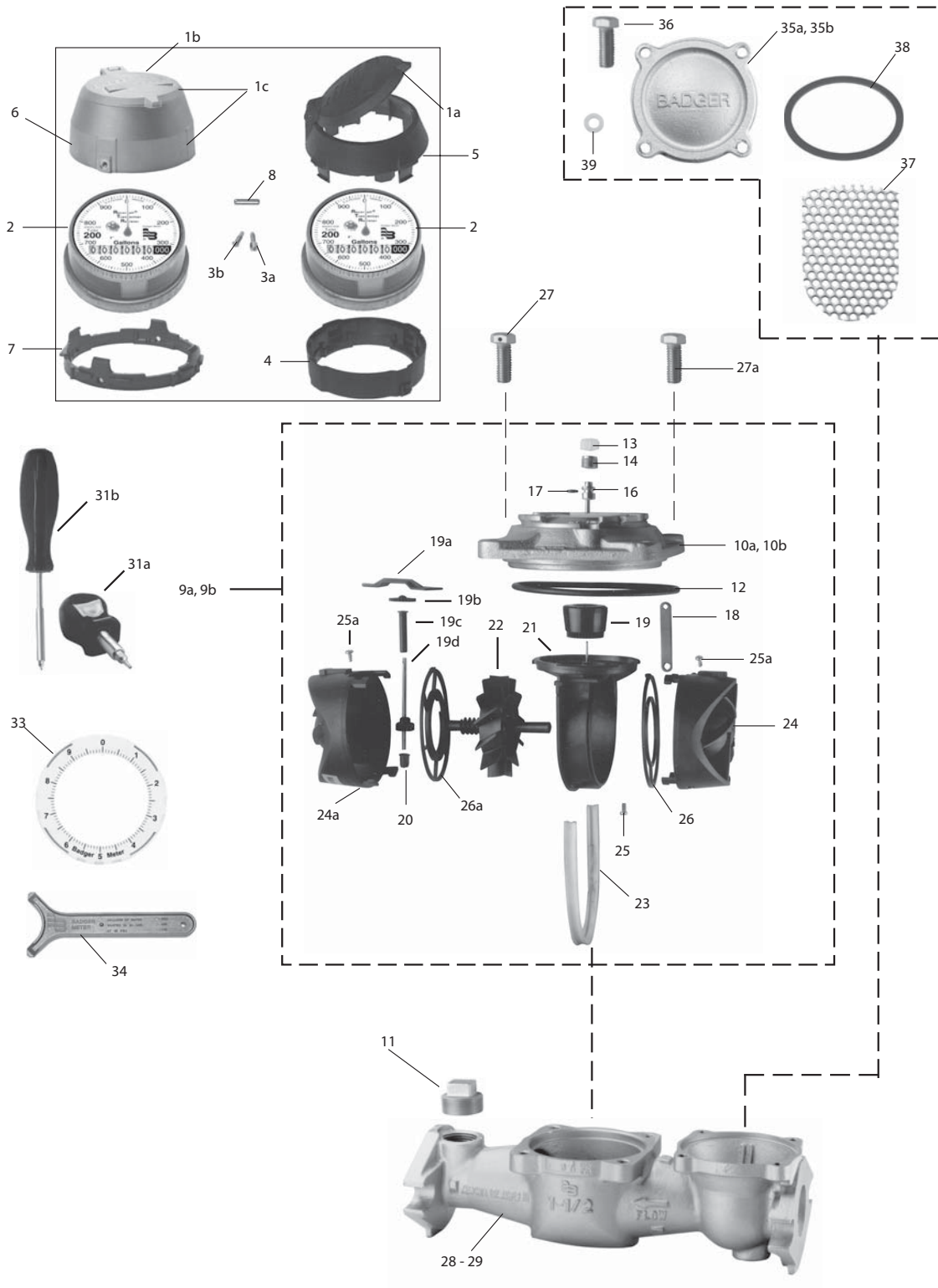
**Models without Integral Strainers, Sizes 1-1/2" to 12"**



**Models with Integral Strainers, Sizes 1-1/2" to 4"**



Sizes 1-1/2", 2", 3" and 4"



Item	Description	Part Numbers for Sizes 1-1/2", 2", 3" and 4"			
		1-1/2"	2"	3"	4"
1a	Register Flat Lid (Plastic)	62278-001	62278-001	62278-001	62278-001
1b	Register Flat Lid (Bronze)	62353-001	62353-001	62353-001	62353-001
1c	Register Flat Lid and Shroud (Bronze)	62616-001	62616-001	62616-001	62616-001
2	Register, 100 Gal. T. C.	64085-001	64085-002	64085-003	64085-004
2	Register, 100 Gal. T. C. (Reclaimed)	64085-031	64085-032	64085-033	64085-034
2	Register, 10 Cubic Ft. T.C.	64085-005	64085-006	64085-007	64085-008
2	Register, 10 Cubic Ft. T.C. (Reclaimed)	64085-035	64085-036	64085-037	64085-038
2	Register, 1 Cubic Meter T. C.	64085-009	64085-010	64085-011	64085-012
2	Register, 1000 Gal. T.C.	—	—	—	—
2	Register, 100 Cubic Ft. T.C.	—	—	—	—
2	Register, 10 Cubic Meter T.C.	—	—	—	—
3a	Tamper-resistant screw, standard (for local register, ADE, RTR)	62335-001	62335-001	62335-001	62335-001
	Tamper-resistant screw, standard (for HR-E LCD encoder, not shown)	62624-001	62624-001	62624-001	62624-001
3b	Tamper-resistant TORX® seal screw (for local register, ADE, RTR)	62516-001	62516-001	62516-001	62516-001
	Tamper-resistant TORX seal screw (for HR-E LCD encoder, not shown)	62516-002	62516-002	62516-002	62516-002
3c	Tamper-resistant keyed seal screw, standard (for local register, ADE, RTR)	66925-001	66925-001	66925-001	66925-001
	Tamper-resistant keyed seal screw, short (for HR-E LCD encoder, not shown)	66925-003	66925-003	66925-003	66925-003
4	Plastic Shroud (Bottom Half)	62279-001	62279-001	62279-001	62279-001
5	Plastic Shroud (Top Half)	62280-001	62280-001	62280-001	62280-001
6	Bronze Shroud (For Flat Lid)	62442-001	62442-001	62442-001	62442-001
7	Pls. Insert for Flat Lid Brz. Shroud	62455-001	62455-001	62455-001	62455-001
8	Flat Lid Hinge Pin	59568-003	59568-003	59568-003	59568-003
9a	Head Assembly (LL), Complete	63010-024	63010-025	63010-026	63010-027
9b	Head Assembly (LL), Complete (for models with Integral Strainer)	63010-025	63010-025	63010-026	63010-027
10	Cover Plate (LL)	66131-002	66131-002	66132-002	66132-002
11	Test Plug (LL)	33879-016	33879-014	33879-012	33879-012
12	O-Ring, Head	62754-002	62754-002	62754-003	62754-003
13	Seal Plug, Calibration Shaft	62793-001	62793-001	62793-001	62793-001
14	Lock Screw, Calibration Shaft	62976-004	62976-004	62976-004	62976-004
16	Calibration Shaft	62976-003	62976-003	62976-003	62976-003
17	O-Ring, Calibration Shaft	62754-001	62754-001	62754-001	62754-001
18	Calibration Linkage	62976-001	62976-001	62976-001	62976-001
19	Magnet Carrier with Top Ball	62976-018	62976-018	62976-019	62976-019
19a	Hold Down Strap	62976-012	62976-012	62976-013	62976-013
19b	Transmission Shaft Gear	62976-022	62976-022	62976-023	62976-023
19c	Transmission Shaft Protection Tube	62976-020	62976-020	62976-021	62976-021
19d	Transmission Shaft Assembly	62976-010	62976-010	62976-011	62976-011
20	Bearing, Lower Transmission	62976-002	62976-002	62976-002	62976-002
21	Cage Insert, Measuring Element	62976-014	62976-014	62976-015	62976-015
21a	Vent Tube	62976-026	62976-026	—	—
22	Rotor Assembly	62976-025	62976-025	62976-062	62976-063
23	Cage Seal	62924-001	62924-001	62924-002	62924-002
24	Straightening Vane & Nose Cone Assembly	62971-003	62976-016	62976-017	62976-017
	Straightening Vane & Nose Cone Assembly (for models with Integral Strainer)	62976-016	62976-016	62976-017	62976-017
24a	Straightening Vane & Nose Cone Assembly	62976-016	62976-016	62976-017	62976-017
25	Cage Setscrew (1 Required)	62976-005	62976-005	62976-005	62976-005

Item	Description	Part Numbers for Sizes 1-1/2", 2", 3" and 4"			
		1-1/2"	2"	3"	4"
25a	Cage / Nosecone Setscrews (2 Required)	62976-007	62976-007	62976-007	62976-007
26	Calibration Ring (Front)	62971-002	62976-065	62976-024	62976-024
26a	Calibration Ring (Rear)	62976-008	62976-008	62976-009	62976-009
27	Head Bolt, w/Seal Hole (1 Required)	25421-043	25421-043	25421-034	25421-034
27a	Head Bolt, w/o Seal Hole (3 Required)	55031-060	55031-060	55031-116	55031-116
28a	Housing, Rd. Flg. (LL), w/o Test Plug	—	62748-007	62764-006	62765-006
28b	Housing, Rd. Flg. (LL) w/ Test Plug	—	62748-006	62764-007	62765-005
28c	Housing, Rd. Flg. (LL) w/ Test Plug (for models with Integral Strainer)	—	63220-003	63127-005	63128-007
29a	Housing, Ellpt. Flg. (LL) w/o Test Plug	62747-006	62749-006	—	—
29b	Housing, Ellpt. Flg. (LL) w/ Test Plug	62747-005	62749-005	—	—
29c	Housing, Ellpt. Flg. (LL) w/ Test Plug (for models with Integral Strainer)	63125-005	63126-005	—	—
31a	TORX Seal Screw Driver and Bit (Stubby)	62658-001	62658-001	62658-001	62658-001
31b	TORX Seal Screw Driver and Bit (Long)	62658-003	62658-003	62658-003	62658-003
32	TORX Seal Screw Driver Bit (not shown)	62657-001	62657-001	62657-001	62657-001
—	Driver bit, keyed seal screw (not shown)	66925-002	66925-002	66925-002	66925-002
—	Bit driver, stubby, without bit (not shown)	62658-005	62658-005	62658-005	62658-005
—	Bit driver, standard, without bit (not shown)	62658-006	62658-006	62658-006	62658-006
33	Register Test Ring	62446-001	62446-001	62446-001	62446-001
34	Plastic Shroud Disassembly Tool	62346-001	62346-001	62346-001	62346-001
35	Strainer Cover (LL) (for models with Integral Strainer)	63233-002	63233-002	63281-002	63281-002
36	Cover Bolt (for models with Integral Strainer)	55031-033	55031-060	55031-062	55031-062
37	Screen (for models with Integral Strainer)	63115-001	63277-001	63283-001	63285-001
38	Gasket (for models with Integral Strainer)	11071-033	22650-050	22650-051	22650-051
39	Washer for Strainer Cover (for models with Integral Strainer)	—	24991-044	24991-044	24991-044



Item	Description	Part Numbers Part Numbers for Sizes 6", 8", 10" and 12"			
		6"	8"	10"	12"
1a	Register Flat Lid (Plastic)	62278-001	62278-001	62278-001	62278-001
1b	Register Flat Lid (Bronze)	62353-001	62353-001	62353-001	62353-001
1c	Register Flat Lid and Shroud (Bronze)	62616-001	62616-001	62616-001	62616-001
2	Register, 10,000 Gal. T. C.	—	—	—	64085-043
	Register, 10,000 Gal. T. C. (Reclaimed)	—	—	—	64085-047
	Register, 1,000 Cubic Ft. T.C.	—	—	—	64085-044
	Register, 1,000 Cubic Ft. T.C. (Reclaimed)	—	—	—	64085-048
	Register, 1 Cubic Meter T. C.	—	—	—	—
	Register, 1,000 Gal. T.C.	64085-017	64085-018	64085-019	—
	Register, 1,000 Gal. T.C. (Reclaimed)	64085-039	64085-041	64085-049	—
	Register, 100 Cubic Ft. T.C.	64085-020	64085-021	64085-022	—
	Register, 100 Cubic Ft. T.C. (Reclaimed)	64085-040	64085-042	64085-050	—
	Register, 10 Cubic Meter T.C.	64085-023	64085-024	64085-025	64085-045
3a	Tamper-resistant screw, standard (for local register, ADE, RTR)	62335-001	62335-001	62335-001	62335-001
	Tamper-resistant screw, standard (for HR-E LCD encoder, not shown)	62624-001	62624-001	62624-001	62624-001
3b	Tamper-resistant TORX seal screw (for local register, ADE, RTR)	62516-001	62516-001	62516-001	62516-001
	Tamper-resistant TORX seal screw (for HR-E LCD encoder, not shown)	62516-002	62516-002	62516-002	62516-002
3c	Tamper-resistant keyed seal screw, standard (for local register, ADE, RTR)	66925-001	66925-001	66925-001	66925-001
	Tamper-resistant keyed seal screw, short (for HR-E LCD encoder, not shown)	66925-003	66925-003	66925-003	66925-003
4	Plastic Shroud (Bottom Half)	62279-001	62279-001	62279-001	62279-001
5	Plastic Shroud (Top Half)	62280-001	62280-001	62280-001	62280-001
6	Bronze Shroud (For Flat Lid)	62442-001	62442-001	62442-001	62442-001
7	Pls. Insert for Flat Lid Brz. Shroud	62455-001	62455-001	62455-001	62455-001
8	Flat Lid Hinge Pin	59568-003	59568-003	59568-003	59568-003
9	Head Assembly (LL), Complete	63010-028	63010-029	63010-030	63010-048
10	Cover Plate (LL)	66133-002	66134-002	66134-002	66134-002
11	Test Plug (LL)	33879-012	33879-012	—	—
12	O-Ring, Head	62754-004	62754-005	62754-005	62754-005
13	Seal Plug, Calibration Shaft	62793-001	62793-001	62793-001	62793-001
14	Lock Screw, Calibration Shaft	62976-004	62976-004	62976-004	62976-004
16	Calibration Shaft	63177-016	62976-048	62976-048	62976-048
17	O-Ring, Calibration Shaft	62754-001	62754-001	62754-001	62754-001
18	Calibration Gear	62976-031	62976-031	62976-031	62976-031
19	Magnet Carrier (with Top Ball)	63177-015	62976-047	62976-047	62976-047
20	Bearing, Lower Transmission	62976-002	62976-002	62976-002	62976-002
21	Cage Insert, Measuring Element	63177-001	62976-034	62976-034	62976-034
22	Rotor Assembly	63177-003	62976-064	62976-046	62976-046
23	Cage Seal	62924-003	62924-004	—	—
24	Straightening Vane & Nose Cone Assembly	63177-002	62976-035	62976-035	62976-035
25	Cage Setscrew (4 Required)	63177-011	62976-044	62976-044	62976-044
25a	Cage / Nosecone Setscrews (2 Required)	62976-050	62976-050	62976-050	62976-050
26	Calibration Ring (Front)	63177-008	62976-041	62976-041	62976-041
26a	Calibration Ring (Rear)	63177-009	62976-042	62976-042	62976-042
26b	Calibration Ring (Rear) Combo Meter & Fire Series only	—	62976-051	62976-051	—
27	Head Bolt, w/Seal Hole (6", 1 Required; 8...12", 2 Required)	25421-044	58088-004	58088-004	58088-004
27a	Head Bolt, w/o Seal Hole	55031-117	55031-172	55031-172	55031-172
28a	Housing, Rd. Flg. (LL) w/o Test Plug	62837-006	—	63355-003	—

Item	Description	Part Numbers Part Numbers for Sizes 6", 8", 10" and 12"			
		6"	8"	10"	12"
28b	Housing, Rd. Flg. (LL) w/ Test Plug	62837-005	63304-004	—	—
28c	Housing, Rd. Flg. (Cast Iron) w/o Test Plug	—	—	—	67101-017
30a	TORX Seal Screw Driver and Bit (Stubby)	62658-001	62658-001	62658-001	62658-001
30b	TORX Seal Screw Driver and Bit (Long)	62658-003	62658-003	62658-003	62658-003
31	TORX Seal Screw Driver Bit (not shown)	62657-001	62657-001	62657-001	62657-001
32	Register Test Ring	62446-001	62446-001	62446-001	62446-001
—	Driver bit, keyed seal screw (not shown)	66925-002	66925-002	66925-002	66925-002
—	Bit driver, stubby, without bit (not shown)	62658-005	62658-005	62658-005	62658-005
—	Bit driver, standard, without bit (not shown)	62658-006	62658-006	62658-006	62658-006
33	Plastic Shroud Disassembly Tool	62346-001	62346-001	62346-001	62346-001
34	Transmission Shaft Gear	63177-007	62976-040	62976-040	62976-040
35	Transmission Shaft Protection Tube	63177-006	62976-039	62976-039	62976-039
36	Transmission Shaft Assembly	63177-010	62976-043	62976-043	62976-043
37	Calibration Ring Drive Plate/Gear	62976-029	62976-029	62976-029	62976-029
38	Retaining Ring	62976-032	62976-032	62976-032	62976-032
39	Washer (4 Required)	63177-012	62976-049	62976-049	62976-049
40	Eyebolts	59215-039	59215-067	59215-067	59215-067

Recordall is a registered trademark of Badger Meter, Inc. Other trademarks appearing in this document are the property of their respective entities.

Due to continuous research, product improvements and enhancements, Badger Meter reserves the right to change product or system specifications without notice, except to the extent an outstanding contractual obligation exists. © 2013 Badger Meter, Inc. All rights reserved.

[www.badgermeter.com](http://www.badgermeter.com)

---

**The Americas | Badger Meter** | 4545 West Brown Deer Rd | PO Box 245036 | Milwaukee, WI 53224-9536 | 800-876-3837 | 414-355-0400

**México | Badger Meter de las Americas, S.A. de C.V.** | Pedro Luis Ogazón N°32 | Esq. Angelina N°24 | Colonia Guadalupe Inn | CP 01050 | México, DF | México | +52-55-5662-0882

**Europe, Middle East and Africa | Badger Meter Europa GmbH** | Nürtinger Str 76 | 72639 Neuffen | Germany | +49-7025-9208-0

**Czech Republic | Badger Meter Czech Republic s.r.o.** | Maříkova 2082/26 | 621 00 Brno, Czech Republic | +420-5-41420411

**Slovakia | Badger Meter Slovakia s.r.o.** | Raciánska 109/B | 831 02 Bratislava, Slovakia | +421-2-44 63 83 01

**Asia Pacific | Badger Meter** | 80 Marine Parade Rd | 21-04 Parkway Parade | Singapore 449269 | +65-63464836

**China | Badger Meter** | 7-1202 | 99 Hangzhong Road | Minhang District | Shanghai | China 201101 | +86-21-5763 5412

Legacy Document Number: RTS-P-1 and RTS-P-2