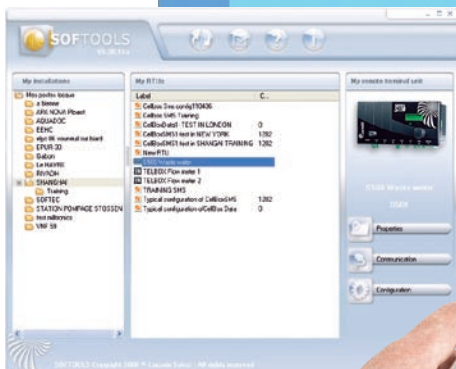
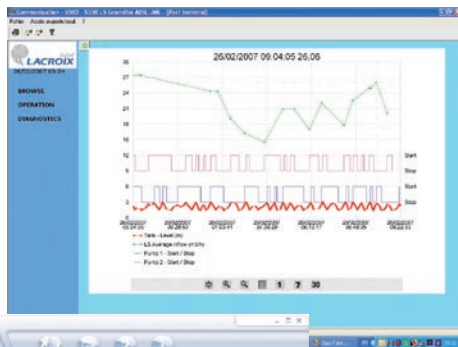


KIMANS
MEASUREMENT & CONTROL INSTRUMENTS



Based on the most recent technologies and the result of our 30-year experience in telemetry and SCADA, the SOFREL S500 range of Remote Terminal Units offers industrial solutions combining performance, implementation simplicity and ease of use.

The S500 Remote Terminal Units offer the ability:

- ▶ To be notified in the event of problems at one of the remote or isolated sites
- ▶ To continuously monitor facility operation
- ▶ To automate processes and to act remotely on devices
- ▶ To optimize and improve the management of distributed technical sites.

SOFREL S500



From remote alarming to complete telemetry and SCADA

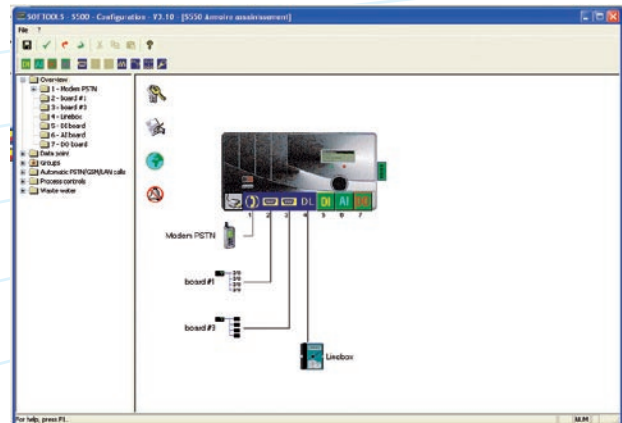
Designed to meet the needs of remote monitoring and management of technical facilities, the SOFREL range of telemetry and SCADA Remote Terminal Units combines several functions: remote alarming, remote measurement, remote counting, remote control, archiving, reports, process controls, network communications, etc.

Perfectly suited for applications in the field of drinking water and waste water treatment, heating and ventilation air control, public lighting, etc., the S500 Remote Terminal Units can be used to secure and automate isolated or distributed sites, to improve the reactivity of the service provided to users, while reducing running and operating costs...



Easy to install and use

Designed to be operated by field workers, the S500 Remote Terminal Units are configured via a particularly user-friendly and intuitive graphical interface. This step is made even simpler as it is performed in clear language that does not require any programming skills. Thus, operators need simply follow the icons displayed and complete the pre-filled input screens in order to configure an S500 in only a few minutes.

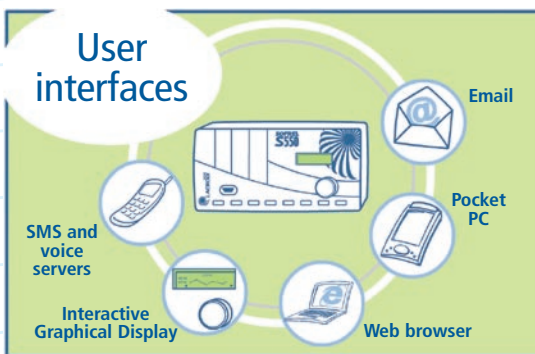


: simple and innovative Remote Ter



Multiple communication interfaces

In order to perfectly meet the operating constraints of remote sites, the S500 Remote Terminal Units offer a broad range of user interfaces. Whether via the Interactive Graphical Display on the Remote Terminal Unit, via a Web browser, or via the SMS and voice servers, S500 operation fits easily into any usage context.



Communication over any medium

Intended to be free of all field communication constraints, the S500 range offers a broad range of transmission methods. Whether over traditional media (PSTN, GSM, DL/PL, Radio, etc.), or their more innovative counterparts (Internet, Ethernet, ADSL, WiFi, etc.), the S500 Remote Terminal Units enable operators to stay in contact with all their facilities, whether nearby or remote.

The S500 Remote Terminal Units are also capable of communicating with other devices: PLCs, Controllers, smart sensors and other Remote Terminal Units for the needs of «inter-RTU» process controls.



Terminal Units



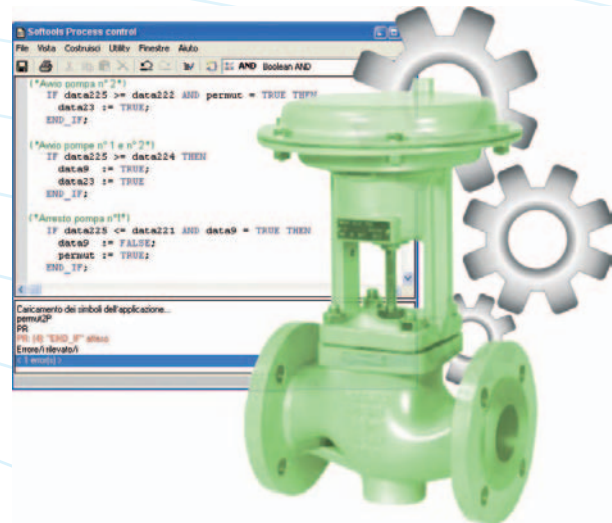
Alarm reporting and stand-by duty management

Designed to alert the appropriate correspondent, at any time and any location, the S500 Remote Terminal Units alarm reporting function makes particular use of vocal or SMS messages. With a simple phone or PC, the agent on stand-by duty can be notified of the anomaly, view other data and, if necessary, act remotely on the facility (remote control, setpoint modification, etc.).

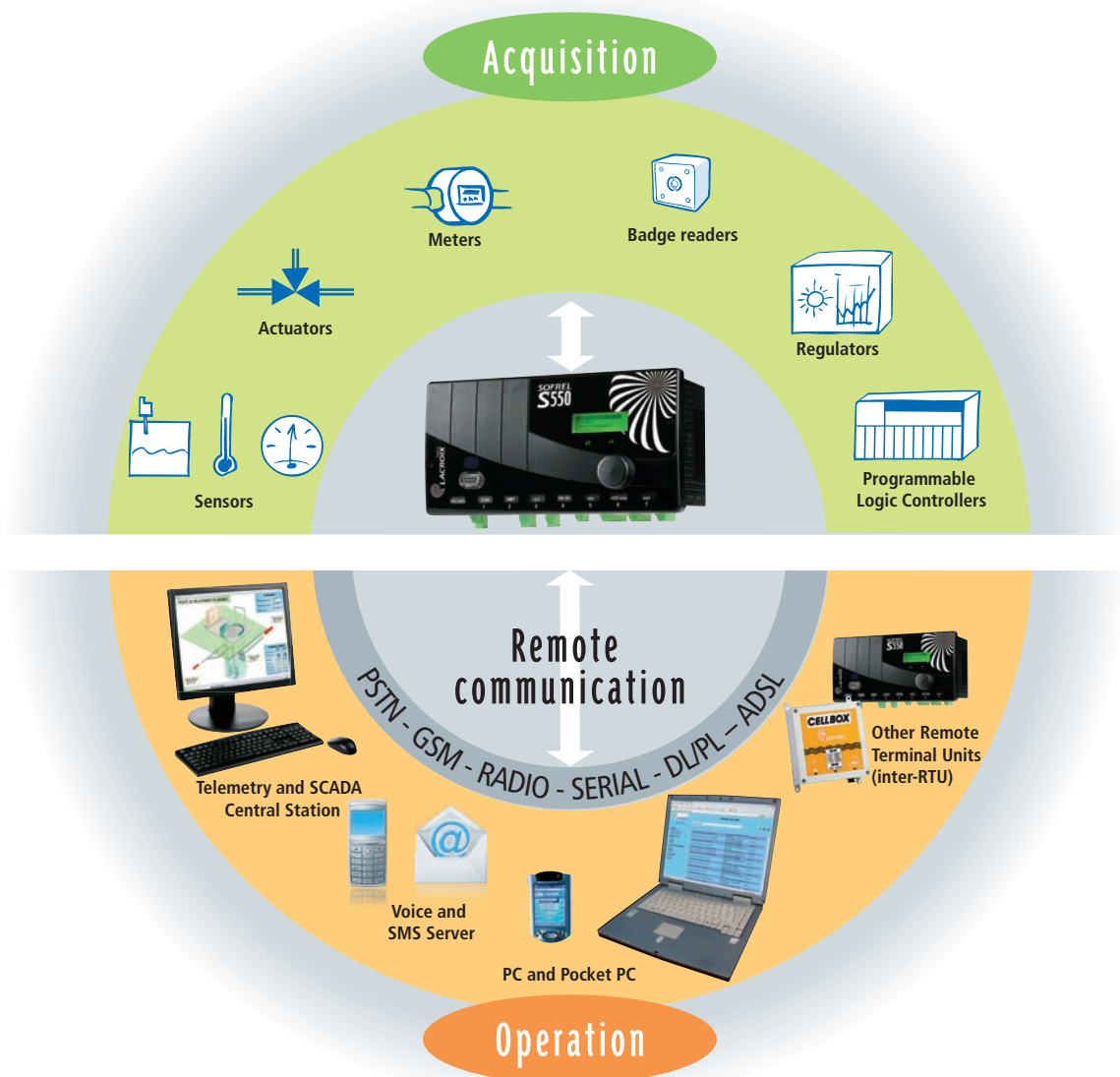


Process control and calculation

In addition to their telemetry and SCADA functions, the S500 Remote Terminal Units offer a broad selection of process control solutions. Whether for simple functions such as threshold controls, more elaborate ones such as device operation switching, or standard language process control programming (ST - IEC 1131-3 standard), the S500 range allows contract operators to find solutions for controlling all of their facilities.



at the heart of your facilities



500 Remote Terminal Units can acquire, manage and retrieve data from the structures on which they are fitted. Collected data are processed directly by the Remote Terminal Units which, thanks to their report, archiving and process control functions, are able to fully manage the controlled facilities. Their multiple communication abilities allow data to be restored to a SCADA central station, communication to be established between remote sites, data to be exchanged with other devices, or direct dialogs to be established with operators.

Concrete benefits:

The S500 Remote Terminal Units stand out by virtue of their functional wealth, their ease of implementation and simplicity of use.

Where necessary, the process control module and IP network communication features allow a high degree of application customization to be achieved.

Complementary, modular and upgradable, the S500 range of Remote Terminal Units provide solutions that can be adapted to each telemetry and SCADA project.

SOFREL S500: a modular and upgradable range



S510
Simplified Remote Terminal Unit



S530
Compact Remote Terminal Unit



S550
Upgradable Remote Terminal Unit



16 DI **6 DO** **8 AI-20** **6 AI-T°**
Inputs/Outputs modules

The modularity of the S500 range allows the creation of solutions suited to every facility size and functional requirement.

Innovation and reliability

LACROIX Sofrel invests heavily in its R&D activities in view of offering innovative, robust and easy to use products. As telemetry and SCADA applications must be perfectly reliable and constantly available, the electronic components included in S500 Remote Terminal Units offer a high degree of EMC (Electromagnetic Compatibility), allowing them to operate in the most adverse environments.

Main seatures

The Remote Terminal Units of the S500 range all share the same communication, Inputs-Outputs and power supply features and boards. Only the motherboard differs from one model to another.

Basic properties	S550	S530	S510
Number of board slots	7	4	4
Interactive Graphical Display	✓	✓	
RS 232 terminal port	✓	✓	✓
IR	✓		
Communication boards	1 to 7	1 to 2	1 to 2
PSTN modem with voice server	✓	✓	✓
GSM modem with voice server	✓	✓	✓
DL/HF (DL/PL) modem for dedicated or private lines	✓	✓	✓
HF 869 Radio modem (no license, 500 mW)	✓	✓	✓
Ethernet 10 BT	✓	✓	✓
RS 232, RS 485, isolated RS 485	✓	✓	✓
Dallas for badge readers (access control)	✓	✓	✓
Inputs/Outputs boards	Up to 7	Up to 4	Up to 4
8 DI (8 Digital Inputs)	✓	✓	✓
4 DO+WDG (4 Digital Outputs + Watchdog)	✓	✓	✓
2 DO (2 Digital Outputs)	✓	✓	✓
4 AI (4 multi-standard Analog Inputs)	✓	✓	✓
2 AI (2 x 4-20 mA Analog Inputs)	✓	✓	✓
4 AO (4 Analog Outputs)	✓	✓	✓
Inputs/Outputs expansion modules	Up to 20		
16 DI (16 Digital Inputs)	✓		
6 DO (6 Digital Outputs)	✓		
8 AI-20 (8 x 4-20 mA Analog Inputs)	✓		
6 AI-T° (6 Temperature Inputs, Pt 100, Pt 1000, Ni 1000)	✓		