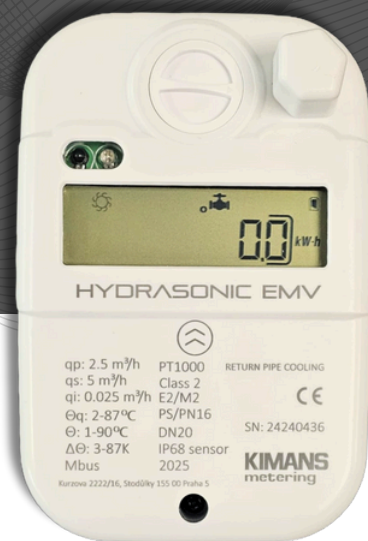


HYDRASONIC EMV

Ultrasonic BTU Meter & Energy Valve

Revolutionizing Flow



The Hydrasonic EMV is an advanced ultrasonic thermal energy (BTU) meter combined with a motorized energy control valve. This intelligent all-in-one device measures thermal energy consumption while regulating flow to optimize system efficiency. Designed for heating and cooling systems, it actively manages delta T through remote-controlled modulation or shut-off, ensuring significant energy savings and streamlined building management.

INTEGRATED
ULTRASONIC BTU METER
AND ENERGY VALVE



ACTIVELY MODULATES
FLOW TO MAINTAIN
TARGET DELTA T



REMOTE SHUT-OFF AND
FLOW CONTROL
CAPABILITIES



LONG BATTERY LIFE
UPTO 6 YEARS/ 24V
EXTERNAL POWER
SUPPLY



IP68 PROTECTION: FULLY
WATERPROOF AND
DUSTPROOF



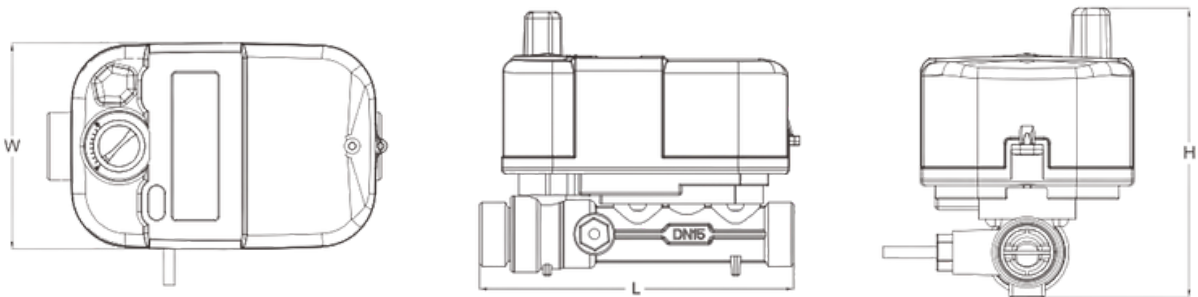
FEATURES

TECHNICAL DATA

| Diameter | Min. Flow | Norm. Flow | Max. Flow | Length |
|------------------------------|---|------------|-------------|--------|
| | qmin (m3/h) | qp (m3/h) | qmax (m3/h) | mm |
| DN15 | 0.015 | 1.5 | 3 | 130 |
| DN20 | 0.05 | 2.5 | 5 | 130 |
| DN25 | 0.07 | 3.5 | 7 | 160 |
| DN32 | 0.12 | 6 | 12 | 180 |
| DN40 | 0.2 | 10 | 20 | 200 |
| Accuracy | Class 2 | | | |
| Connection type | Threaded connection | | | |
| Pressure loss | ≤0.02MPa | | | |
| Max. working pressure | 1.6MPa | | | |
| Temperature sensor | 1.5m standard two-wire PT1000 paired temperature sensor (wire length can be reserved) | | | |
| Data storage | Continuous storage of the previous 24 months of history | | | |
| Communication | Optical/MBus/RS-485/LoRaWAN/NB-IoT/Zigbee/wMBus | | | |
| Power supply | 3.6V Lithium battery/External DC24V | | | |
| Protection grade | IP68 | | | |
| Environmental | Class A | | | |
| Temperature range | (4 ~ 95) °C | | | |
| Temperature difference range | (2 - 90) K | | | |
| Installation method | water inlet or water return | | | |
| Installation position | Horizontal or vertical | | | |
| Battery life | Upto ≥ 6 years | | | |
| Display | 8-bit LCD liquid crystal display | | | |
| Anti- magnetic interference | The meter shall maintain accurate metering and remote transmission performance when exposed to a magnetic field with an intensity of up to 100 kA/m | | | |

DIMENSIONS

| Nominal Diameter | DN15 | DN20 | DN25 | DN32 | DN40 |
|------------------|--------|------|---------|---------|------|
| Thread | G 3/4B | G1B | G1 1/4B | G1 1/2B | G2B |
| L (mm) | 130 | 130 | 160 | 180 | 200 |
| W (mm) | 88 | 88 | 88 | 88 | 88 |
| H (mm) | 125 | 129 | 136 | 139 | 149 |



HYDRASONIC EMV is a registered trademark of Kimans Metering. Due to continuous R&D, product improvements and enhancements, Kimans Metering reserves the right to change product or system specifications without notice, except to the extent an outstanding contractual obligation exists. © 2024 Kimans Metering. All rights reserved.

www.kimans.com