

SMART VALVE SVM-21E

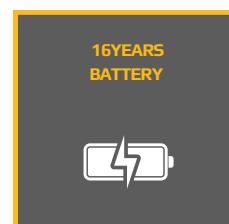
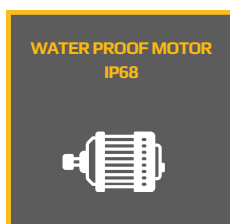
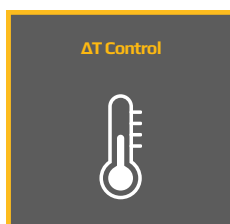
Smart Energy Valve

Revolutionizing Flow



The SVM-21E smart valves are battery-powered, M-Bus-operated open/close valves for remote flow disconnection, featuring manual override, integrated monitoring/control software, and error reporting. Housed in an IP68-rated enclosure, they include temperature sensors to enable ΔT (delta-T) control.

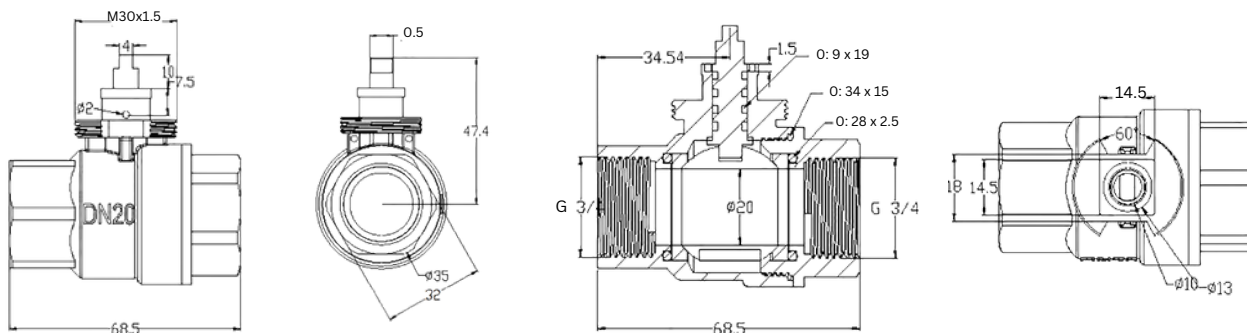
The upgraded SVM is optimized for chilled water applications, with enhanced IP68-rated motor and sealing to withstand high condensation/submersion. Available in DN15–DN40, compatible with all M-Bus masters.



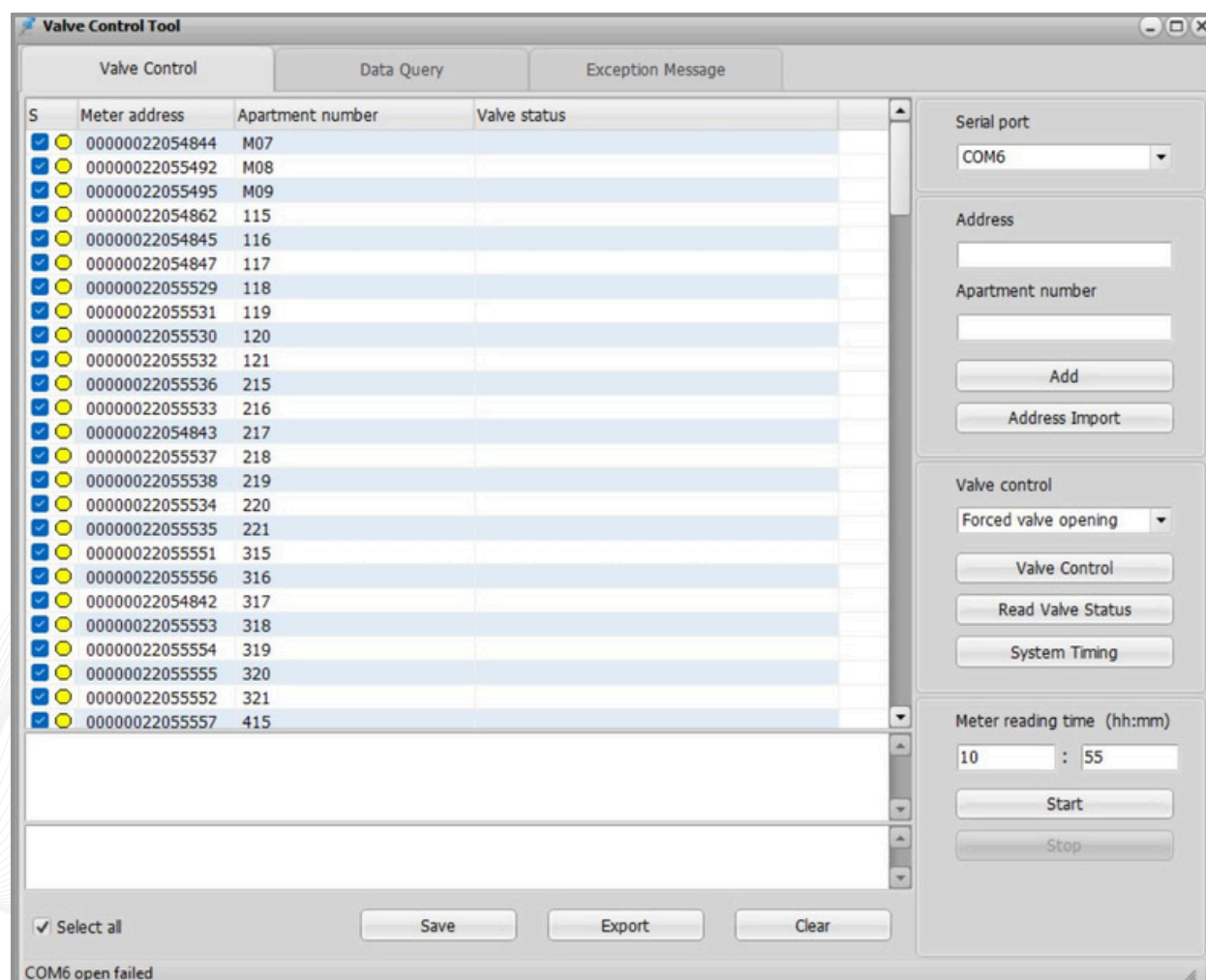
TECHNICAL DATA

Nominal Diameter	mm	DN15 to DN40
Ambient Temperature	°C	-25 to 65
Operating Temperature	°C	4 - 90°C(lower/higher temperature on demand)
Pressure Rating	Bar	PN 16(standard)/PN 20 and PN 25(optional)
Protection	-	IP68
Communication	-	Wired M-Bus
Material of Construction (MOC)	-	Brass
Power Supply	-	Battery ; lifetime up-to 16 years
Mbus Cable Length	-	1m
Data Read Option	-	Valve OPEN/CLOSE Command and Errors [Reporting errors : Valve operation error & M-Bus communication error]
Data Write Option	-	OPEN/CLOSE Command
Temperature Sensor	-	1.5m standard two-wire PT1000 paired temperature sensor (wire length can be reserved)

DIMENSIONS



SOFTWARE INTERFACE



SVM-21 E is a registered trademark of Kimans Metering. Due to continuous R&D, product improvements and enhancements, Kimans Metering reserves the right to change product or system specifications without notice, except to the extent an outstanding contractual obligation exists. © 2024 Kimans Metering. All rights reserved.

www.kimans.com